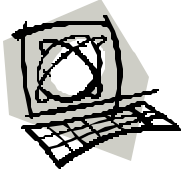




## ADDITIONAL RESOURCES FOR WORKFORCE BOARD MEMBERS



### Web Sites

**[www.texasworkforce.org](http://www.texasworkforce.org)** – The Texas Workforce Commission, 28 local workforce development boards and their service contractors work together as the Texas Workforce Network, dedicated to developing the workforce of Texas. Information includes Reports & Publications, Program Information, a Workforce Board Directory, Workforce Development letters, Labor Market Information, Laws & Rules and other related sites.

**[www.workforce-excellence.net](http://www.workforce-excellence.net)** – Engaging state and local workforce development organizations in a voluntary process of pursuing performance excellence.

**[www.doleta.gov](http://www.doleta.gov)** – United States Department of Labor’s Employment & Training Administration site. Supports state and local workforce development systems in their efforts to provide high quality job training, employment, labor market information and income maintenance services.

**[www.usworkforce.org](http://www.usworkforce.org)** – Designed to provide answers to current and emerging questions about the implementation of the Workforce Investment Act. Provides access to workforce information and resources to work toward innovation and effective partnerships and programs.

**[www.oag.state.tx.us](http://www.oag.state.tx.us)** – Office of the Attorney General – to get information on open government, Open Records and Open Meetings Act.

**[www.governor.state.tx.us/tcwec](http://www.governor.state.tx.us/tcwec)** – Click on Strategic Plan to get information about the Texas Council on Workforce and Economic Competitiveness, which serves as the State Workforce Investment Board, and its statewide strategic plan for workforce development.

**[www.ethics.state.tx.us](http://www.ethics.state.tx.us)** – Serves as a repository of required disclosure statements for state officials, political committees, candidates and lobbyists and a clearinghouse for public and press inquiries.



## **Books, Manuals, Brochures and Papers**

*Texas Workforce New Board Member Orientation Manual* - A guide to how Texas works. Every new board member receives this guide which contains information members need to fulfill their role as a workforce development board member.

*Workforce Board Leadership: Advice from Experienced CEOs* - National Association of Workforce Board's Workforce Board Development Series. (order through [www.naswa.org](http://www.naswa.org))

*Overseeing One-Stops: A WIB Member's Guide to Quality Assurance* - National Association of Workforce Board's Workforce Board Development Series. (order through [www.naswa.org](http://www.naswa.org))

*Putting Your WIB on the Political Map: Tips on Marketing, Communications and Public Relations* - National Association of Workforce Board's Workforce Board Development Series. (order through [www.naswa.org](http://www.naswa.org))

*Discussions with Board Directors and Chairs: Setting the Stage for Workforce Board Success* - National Association of Workforce Boards.

*Meeting Market Demands -- New Roles for One-Stop Centers: Serving the Business Customer* - Business Coalition for Workforce Development. (can be obtained through [www.workforceinfo.net](http://www.workforceinfo.net))

*Leadership for the New Economy – New Roles and Responsibilities of Workforce Boards* - Business Coalition for Workforce Development. (can be obtained through [www.workforceinfo.net](http://www.workforceinfo.net))

*Rise to the Challenge: A Business Guide to Creating a Workforce Investment System that Makes Sense* - Business Coalition for Workforce Development. (can be obtained through [www.workforceinfo.net](http://www.workforceinfo.net))

*Boards That Make a Difference: A New Design for Leadership in Nonprofit and Public Organizations* - John Carver. (can be obtained through [www.amazon.com](http://www.amazon.com))

*Welcome to the Board: Your Guide to Effective Participation* - Fisher Howe. (can be obtained through [www.amazon.com](http://www.amazon.com))

*Return on Investment: Guidelines to Determine Workforce Development Impact - 2<sup>nd</sup> Edition.* Dennis K. Benson, Ph.D. Estimating the economic impact of publicly funded workforce development programs. (can be obtained through [www.amazon.com](http://www.amazon.com))

*Workforce 2020* - Richard Judy and Carol D'Amico. Skilled economists, education experts and policy researchers provide a vision of the future American workforce and what workforce development professionals should be doing to prepare.

*The TWC Financial Manual for Grants and Contracts* – if the board member is on a contract or finance committee, this manual might help with understanding contracts better – on the TWC Intranet under **TWC Divisions, Workforce Development, Financial Manual Download.**

*Chief Elected Officials Membership Guide for Local Workforce Development Boards* – The Guide provides a list of all state and federal requirements for the establishment of boards relating to appointments, re-appointments, and vacancies. (can be obtained through TWC's Board Relations Unit)



## **Associations**

*American Public Human Services Association* – a nonprofit organization of individuals and agencies concerned with human services. The mission of APHSA is to develop, promote, and implement public human service policies that improve the health and well being of families, children and adults. [\*\*www.aphsa.org\*\*](http://www.aphsa.org)

*National Association of State Workforce Agencies* – the national organization of state administrators of unemployment insurance, employment and training services, and labor market information programs. The mission of NASWA is to strengthen the National Workforce Development Network through information exchange, liaison and advocacy. [\*\*www.naswa.org\*\*](http://www.naswa.org)

*National Association of Workforce Boards* – a professional association providing information about serving on boards – represents the interests of the nation's Workforce Boards – NAWB supports and promotes the work of its members through a comprehensive program of advocacy, technical assistance and communications activities. [\*\*www.nawb.org\*\*](http://www.nawb.org)

*National Association of Counties* – promoting innovation and excellent performance in locally based workforce programs through conferences, training sessions, publications and peer-to-peer exchanges. [www.naco.org](http://www.naco.org), click on Affiliates then on National Workforce Association

*National Leadership Institute* – an alliance of organizations dedicated to transforming the nation’s workforce investment system into a high performance system. Serves workforce board members and key staff by providing access to a wide variety of leadership development resources and tools. [www.WIBleadership.com](http://www.WIBleadership.com)

*National Alliance of Business* – Focuses on improving America’s workforce. NAB directs programs, shapes public policy and builds coalitions and partnerships. [www.NAB.com](http://www.NAB.com)

*Business Coalition for Workforce Development* – Helping employers set up effective skills training and employment systems in every community under the federal Workforce Investment Act. [www.workforceinfo.net](http://www.workforceinfo.net)

*National Center for Nonprofit Boards* – dedicated to increasing the effectiveness of nonprofit organizations by strengthening their boards. NCNB is also the world’s largest, most comprehensive publisher of material on nonprofit governance. [www.ncnb.org](http://www.ncnb.org)

*National Association of Workforce Development Professionals* – A professional association for individuals working in employment and training and related workforce development programs. [www.nawdp.org](http://www.nawdp.org)

*The John J. Heldrich Center for Workforce Development* – a research and policy organization dedicated to educating business, policymakers, union leaders, academia, the media, and the public about the workforce development system and its role in our changing economy and workplaces. Provides guidance, information, training and technical tools to the community of professionals and managers who are responsible for making the workforce investment system work. [www.heldrich.rutgers.edu](http://www.heldrich.rutgers.edu)